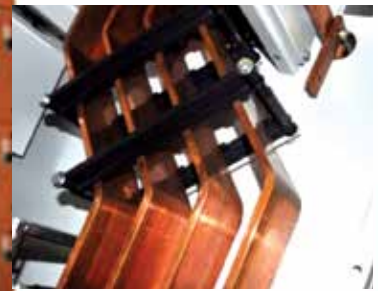




# LV Assembly Systems and Components

CATALOGUE





# CONTENTS:

## Merlin fixed and withdrawable assembly system

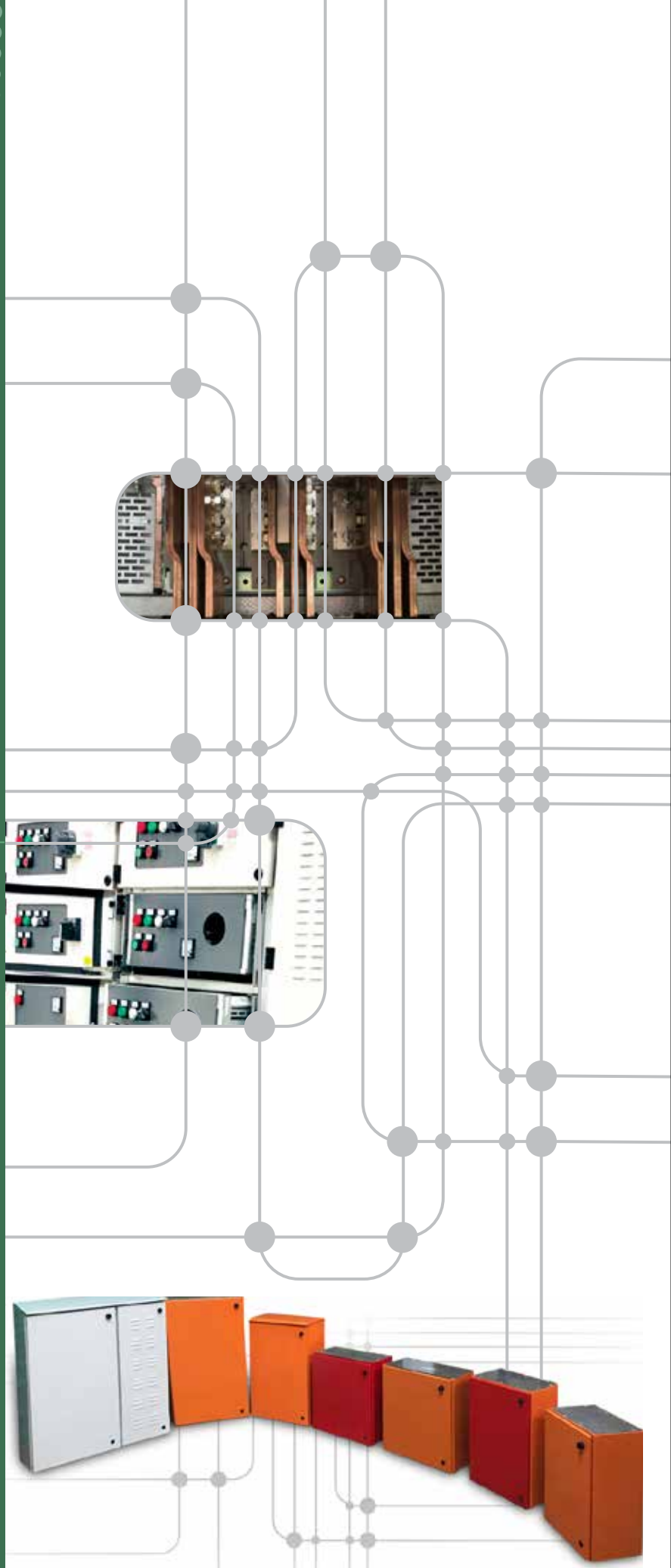
- Overview
- Selection data
- Notes to panel builders, consultants and clients

## Insulating components

- Busbar supports
- Busbar support system
- Insulators
- Withdrawable components

## Wall mount enclosures and covers

- Standard range modular wall mount enclosures
- Variable speed drive covers



# MERLIN FIXED AND WITHDRAWABLE MODULAR SYSTEM



## OVERVIEW

The Merlin system is a South African developed Assembly system which has been design verified to IEC 61439-2 to meet the South African environment. In addition to the IEC standards the testing has met the stringent requirements to achieve ASTA certification.



The busbar support system is partially manufactured in SA under agreement with Termate (UK) with the moulded insulated components being supplied by Termate.

The Merlin System allows a combination of fixed pattern and withdrawable starter buckets using plugable devices on power circuits where the overall weight is impractical to use a complete bucket. Testing was done with withdrawable incoming devices (ACB's) to ensure the worst case scenario of heat rejection from the device was considered.

The modular design of the system allows for easy selection of enclosure requirements for motor starters and incoming devices. The standard copper busbar punching detail reduces copper manufacture time and allows easy assembly.

Temperature rise tests with a rated diversity factor (RDF) of 1 have been done on the system in fixed and withdrawable configurations.



During testing over 200 test probes are used to ensure heat dissipation meets system design requirements.

# MERLIN FIXED AND WITHDRAWABLE MODULAR SYSTEM (CONTINUED)

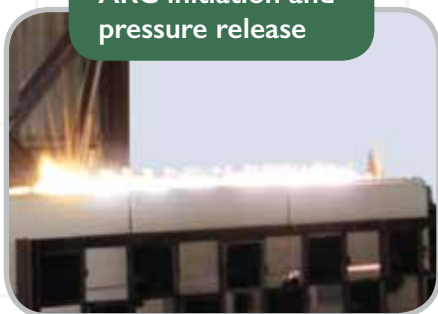


IP rating test is done in accordance with IEC 60529 in the test labs to ensure compliance.

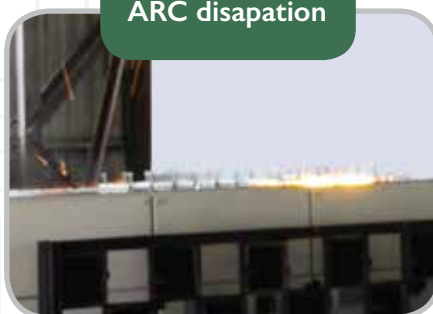


The main busbar system was tested at Netfa(SA) for arc containment (at 50kA to IEC Technical Report 61641) with the Merlin Arc Pressure Valve (MAPV) performing well in safely releasing the pressure created and ensuring the IP rating of the panel was not compromised. The external spring mechanism allows easy visual inspection and prevents damage to the mechanism in the event of an arc fault.

**ARC initiation and pressure release**



**ARC disipation**



**Enclosure integrity restored**



The South African National Standards are vague when considering device substitutions with a number of different opinions within the local industry. Where the project specification or client requirements does not support device substitution Merlin Systems will partner with any of the major brands to supplement the additional tests required within the assembly to allow the panel builder to fully comply to IEC 61439-2.



## SPECIFICATIONS

- Fixed pattern up to 3200A incomer.
- Withdrawable up to 3200A incomer.
- Top or bottom entry / exit.
- Rear power terminal section or cableway tier.
- 50kA/1s Fault LVL.
- All incoming and outgoing devices from 400-3200A, are designed with termination kit.
- 690V insulation rating (switchgear component limit).
- 1000V insulation rating (incomer and busbar systems).
- Tested for South African voltage requirement of 400V +/- 10% @ 50HZ
- IP 3X rated.
- Square key latches on door (every door to have one latch lockable).
- Form 3b separation.
- Access covers on rear secured with screws.
- Termate busbar support system.
- Merlin Arc Pressure Valve (MAPV).
- Selection charts based on modules.
- Modular design allows for future extension on all assemblies.

## TESTING / CERTIFICATION

- IEC 61439-2 certified
- ASTA accredited.
- Meets and exceeds:
  - SANS: 1973-1 (Assemblies above 10kA)
  - 1973-3 (Assemblies 10kA and below)
  - 1973-8 (Minimum tested assemblies above 10kA and less than 1600A)
  - (Note: SANS standard makes reference to 60439 I, which has been withdrawn by IEC and replaced with IEC 61439-1 & 2. Testing to IEC 61439-2 exceeds testing done to 60439-1.)
- ARC containment to IEC/TR61641

## TEST LABS

- kA testing facility (UK)
- IPH Berlin (Germany)
- Prof. Ir. Damstra Laboratory (Netherlands)
- Netfa (SA) (arc containment test only)

# SELECTION DATA



## FIXED PATTERN FOR M600-22/M600-25/M800-22/M800-25 RANGE

(Form 3B up to 50kA Fault level)



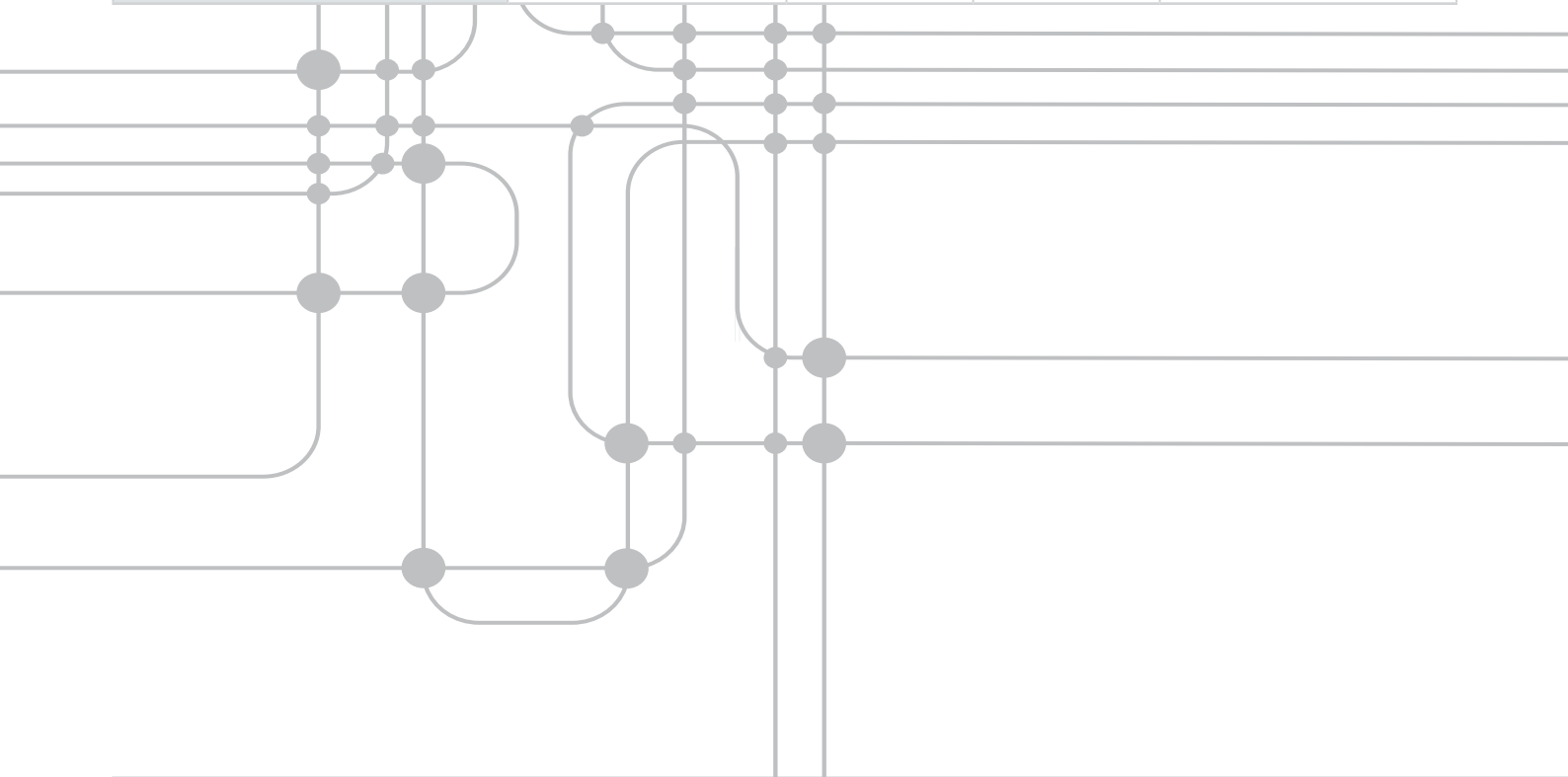
ASSEMBLY	ASSEMBLY RATING (MAIN INCOMING DEVICE)	MODULES	WIDTH (mm)	HEIGHT (mm)	PART NO.
M600-22 ACB INCOMER	800 A - 1600 A		800	2210	M600-22-8-116A
M600-22 STD CUBICLE MODULE	250 A - 1600 A	22	600	2210	M600-22-6-SM
M600-22 CABLEWAY	250 A - 1600 A		400	2210	M600-22-4-CW
M600-25 ACB INCOMER	800 A - 1600 A		800	2450	M600-25-8-116A
M600-25 STD CUBICLE MODULE	250 A - 1600 A	25	600	2450	M600-25-6-SM
M600-25 CABLEWAY	250 A - 1600 A		400	2450	M600-25-4-CW
M800-22 ACB INCOMER	2000 A – 3200 A		900	2210	M800-22-9-132A
M800-22 STD CUBICLE MODULE	2000 A – 3200 A	22	600	2210	M800-22-6-SM
M800-22 CABLEWAY	2000 A – 3200 A		400	2210	M800-22-4-CW
M800-25 ACB INCOMER	2000 A – 3200 A		900	2450	M800-25-9-132A
M800-25 STD CUBICLE MODULE	1600 A – 3200 A	25	600	2450	M800-25-6-SM
M800-25 CABLEWAY	1600 A – 3200 A		400	2450	M800-25-4-CW

The above ratings are standards. For more options contact Merlin Systems.



# SELECTION DATA (CONTINUED)

Circuit Type	Rating 400V/550 V	Min Module Qty	Min Size (mm)	Part No.
<b>MOTOR</b> STAR/DELTA DOL VSD  (VSD EXTERNAL TO ASSEMBLY)	≤ 15 kW	3	240	MF150M
	18.5 kW	4	320	MF185M
	22 kW	4	320	MF220M
	30 kW	4	320	MF300M
	37 kW	5	400	MF370M
	45 kW	5	400	MF450M
	55 kW	6	480	MF550M
	75 kW	6	480	MF750M
	90 kW	6	480	MF900M
<b>SUPPLY/INCOMER</b>	250 A (MCB)	7	560	MF250SI
	400 A (MCB)	8	640	MF400SI
	630 A (MCB)	9	720	MF630SI
	800 A (MCB)	12	960	MF800SI
	1000 A (MCB/ACB)	14	1120	MF1000SI
	1250 A (ACB)	18	1440	MF1250SI
	1600 A (ACB)	22	1760	MF1600SI
	2000 A (ACB)	22	1760	MF2000SI
	2500 A (ACB)	22	1760	MF2500SI
3200 A (ACB)	22	1760	MF3200SI	





## SELECTION DATA (CONTINUED)

### WITHDRAWABLE BUCKETS FOR M800-22/M800-25 RANGE

(Form 3B up to 50kA Fault level)



Assembly	Assembly Rating (Main Incoming Device)	Modules	Width (mm)	Height (mm)	Part No.
M800-22 ACB INCOMER	1600 A		800	2210	MWD800-22-8-116A
M800-22 STD CUBICLE MODULE	1600 A	22	600	2210	MWD800-22-6-SM
M800-22 CABLEWAY	1600 A		400	2210	MWD800-22-4-CW
M800-25 ACB INCOMER	1600 A		800	2450	MWD800-25-8-116A
M800-25 STD CUBICLE MODULE	1600 A	25	600	2450	MWD800-25-6-SM
M800-25 CABLEWAY	1600 A		400	2450	MWD800-25-4-CW

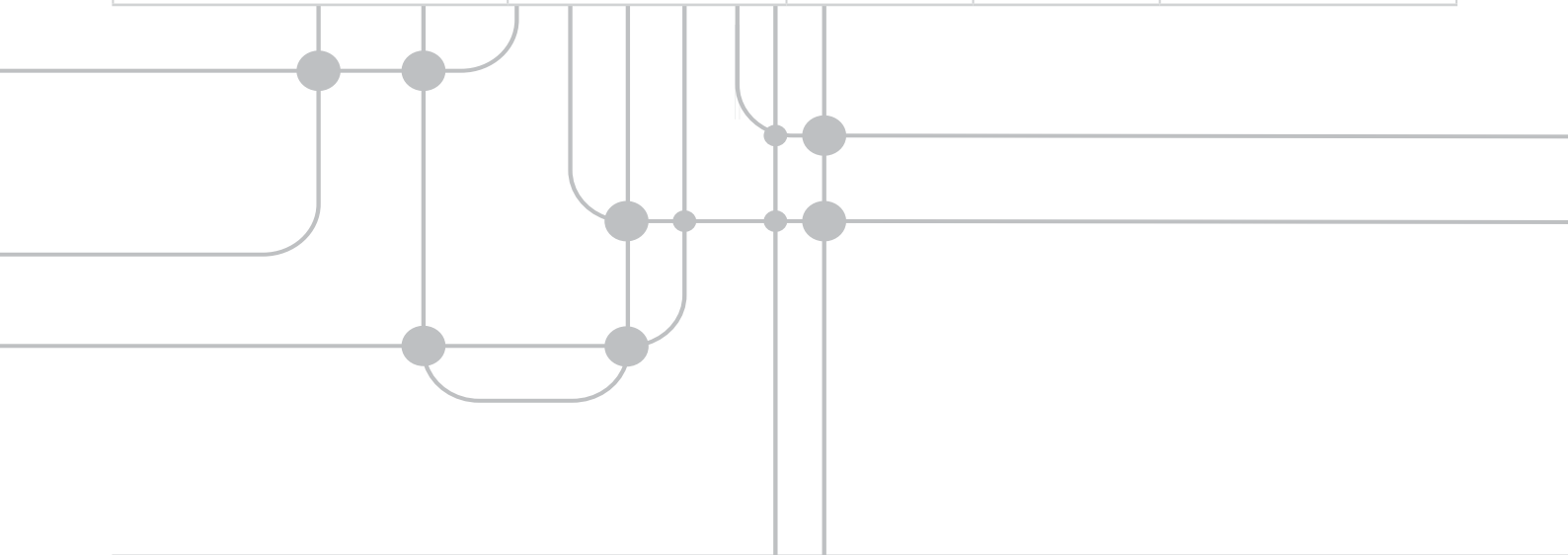
*The above ratings are standards. For more options contact Merlin Systems.*





# SELECTION DATA (CONTINUED)

Circuit Type	Rating 400V/550 V	Min Module Qty	Min Size (mm)	Part No.
<b>MOTOR REMOVEABLE BUCKET STAR DELTA DOL VSD</b>  <i>(VSD EXTERNAL TO ASSEMBLY)</i>	≤ 7.5 kW DOL only	2	160	MWDM160BA
	11 kW	3	240	MWDM240BA
	15 kW	3	240	MWDM240BA
	22 kW	4	320	MWDM320BA
	30 kW	5	400	MWDM400BA
	37 kW	6	480	MWDM480BA
	45 kW	6	480	MWDM480BA
	55 kW	6	480	MWDM480BA
<b>SUPPLY REMOVEABLE BUCKET</b>	16 A (MMS)	2	160	MWDS160BA
	50 A (MCB)	3	240	MWDS240BA
	63 A (MCB)	3	240	MWDS240BA
	80 A (MCB)	4	320	MWDS320BA
	100 A (MCB)	4	320	MWDS320BA
	125 A (MCB)	4	320	MWDS320BA
	160 A (MCB)	4	320	MWDS320BA
	200 A (MCB)	4	320	MWDS320BA
	250 A (MCB)	5	400	MWDS400BA
	400 A (MCB)	6	480	MWDS480BA
<b>SUPPLY FIXED BUCKET - PLUGABLE DEVICE</b>	400 A	9	720	MWDSI400FB
	630 A	9	720	MWDSI630FB
	800 A	12	960	MWDSI800FB
	1000 A	14	1120	MWDSI1000FB
	1250 A	18	1440	MWDSI1250FB





# TECHNICAL NOTES

## PANEL BUILDERS, CONSULTANTS AND CLIENT/END USERS

Recommend rear access of 800mm with a minimum of 600mm for completely isolated panels.

- Operational front access of 1200mm
- All panels are supplied with the option of extension on either end.
- All shipped sections can be moved / rigged with standard 2,5T forklift.
- Merlin Arc Pressure Valve (MAPV) requirement to be advised at time of quote / order.
- Standard heavy-duty base of 3mm mild steel welded construction and powder coated black.
- Frame, covers and chassis plates made of Aluzinc, giving good bonding properties with powder coating optional.
- Gland plates of 2,5mm galvanized plates as standard, 3mm galvanized and 5mm aluminium is optional.
- Doors and covers standard colours: light grey or orange. Additional colour options available.
- We recommend using ACB's for main incoming and any outgoing circuit of 800A, 1000A, 1250A, 1600A, 2000A, 2500A and 3200A.
- IP3X recommended for internal panels as higher IP ratings cause switchgear components to operate at higher temperatures thus reducing the service life.

# INSULATING COMPONENTS AND BUSBAR SYSTEMS



## OVERVIEW

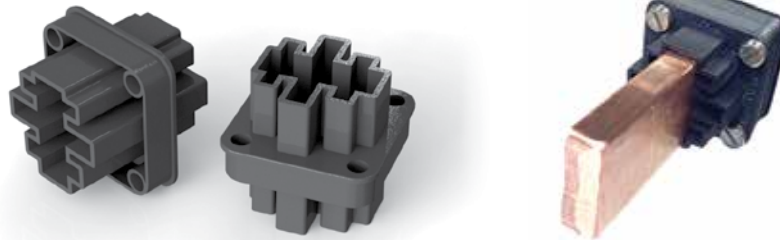
All the insulating components meet the requirements of IEC 61439 and have been used in multiple design verification tests. The components can be used where panel builders need to replace previous components or need to undertake design verification of a complete system to gain certification for a design. The components shown in this catalogue are readily available in SA. The full range of components can be viewed on the website [www.termate.com](http://www.termate.com) and these can be supplied and stocked if required.

The busbar systems have been short circuit tested and can be used where compliance to SANS 1973-8 is required.

## COMPONENTS

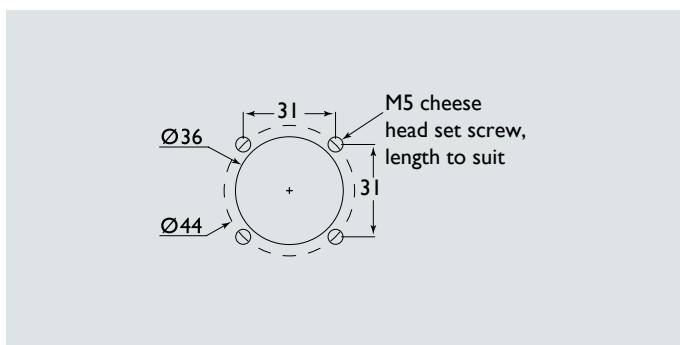
### BUSHINGS

IEC 61439 compliant  
 Self extinguishing: UL94-V0  
 Glow wire 960 deg C  
 Equipment Voltage  $U_e$  690V  
 Insulation Voltage  $U_i$  690V  
 Impulse Voltage  $U_{imp}$  8kV  
 Versatile – 2 sizes each accept 4 different conductor sizes

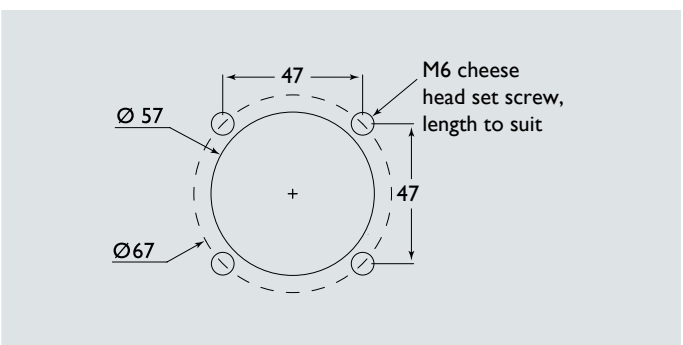


Description	Application	Copper Size	Fault LVL	Part No.
B4-30 Bushing	Support Cu Bars Through sheetmetal	20x3 20x4 30x5 30x10	50kA – verified in Merlin Assembly	TB4-30
B4-50 Bushing	Support Cu Bars Through sheetmetal	25x5 20x10 40x10 50x10	50kA – verified in Merlin Assembly	TB4-50

**B4-30 Bushings – Punching Details**



**B4-50 Bushings – Punching Details**



# INSULATING COMPONENTS AND BUSBAR SYSTEMS (CONTINUED)



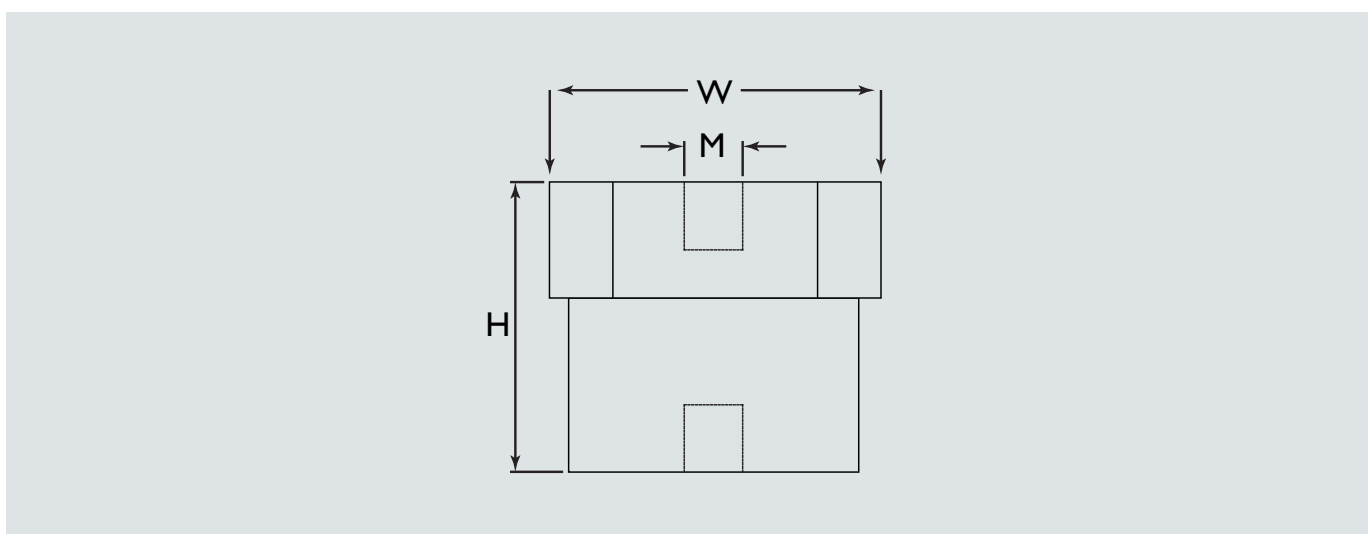
## STAND OFF INSULATORS



Max operating temp 130 degC  
 IEC 61439 compliant  
 Self extinguishing: UL94-V0  
 Glow wire 960 deg C  
 Equipment Voltage Ue 1000V  
 Insulation Voltage Ui 1000V  
 Impulse Voltage U imp 12kV



Description	Application	Connection	Height (H)	Width (W)	Part No.
C2X625F	Control bars and small power	M6 Female-Female	25mm	25mm	TC2X635
C2X635F	Control bars and small power	M6 Female-Female	35mm	35mm	TC2X635F
C3X645F	Control bars and small power	M6 Female-Female	45mm	35mm	TC3X645F
C3X650F	Control bars and small power	M6 Female-Female	50mm	35mm	TC3X650F



# INSULATING COMPONENTS AND BUSBAR SYSTEMS (CONTINUED)



## BUSBAR SUPPORT - MX



Wide range of phase, bar and pole centres

lcw up to 65kA/3s

Self extinguishing: UL94-V0

IEC 61439 compliant

Glow wire 960 deg C

Equipment Voltage  $U_e$  1000V

Insulation Voltage  $U_i$  1000V

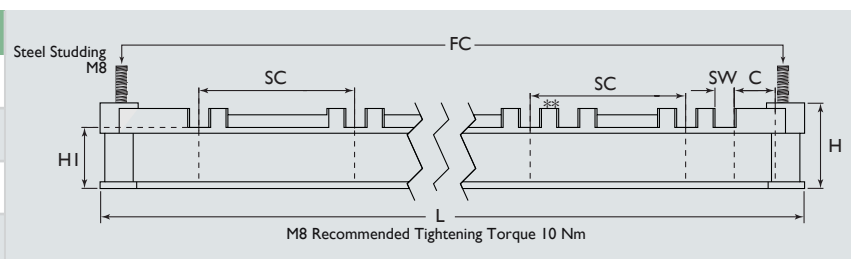
TMXM6524NS is 800v/8kv

Impulse Voltage  $U_{imp}$  12kV



Description	Application CU Width/ ph/ph No.	Phase Centres	Fixing Hole ctrs	Fault LVL	Spacing	Part No.
MXB6514NS	1x6.3mmCU/ph / 4	65mm	253mm	50 kA	320mm	TC2X635
MXM6014NS	1x10mmCU/ph / 4	60mm	253mm	50 kA	320mm	TMXM6014NS
MXM6514NS	1x10mmCU/ph / 4	65mm	253mm	50 kA	320mm	TMXM6514NS
MXM6524NS	2x10mmCU/ph / 4	65mm	253mm	50 kA	320mm	TMXM6524NS
MXM8213NS	1x10mmCU/ph / 3	82mm	253mm	50 kA	320mm	TMXM8213NS
MXM8214NS	1x10mmCU/ph / 4	82mm	330mm	50 kA	320mm	TMXM8214NS
MXM8223NS	2x10mmCU/ph / 3	82mm	253mm	50 kA	320mm	TMXM8223NS
MXM8224NS	2x10mmCU/ph / 4	82mm	330mm	50 kA	320mm	TMXM8224NS
MXM11013NS	1x10mmCU/ph / 3	110mm	330mm	50 kA	320mm	TMXM11013NS
MXM11023NS	2x10mmCU/ph / 3	110mm	330mm	50 kA	320mm	TMXM11013NS

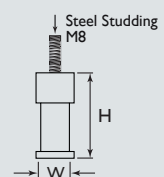
Spacers			
Clip on	5mm	FIT M8	TMXS5
Clip on	7mm	FIT M8	TMXS7
Clip on	12mm	FIT M8	TCP12
Clip on	25mm	FIT M8	TCP25



Please refer to the spacer selection table for recommended spacers which must be ordered separately.

If using another method of fixing, please take into account the reduced creepage and clearance distances to the adjacent busbar.

\*For the 2 bar version the dimension of the pip between the bars is the same as the conductor width.



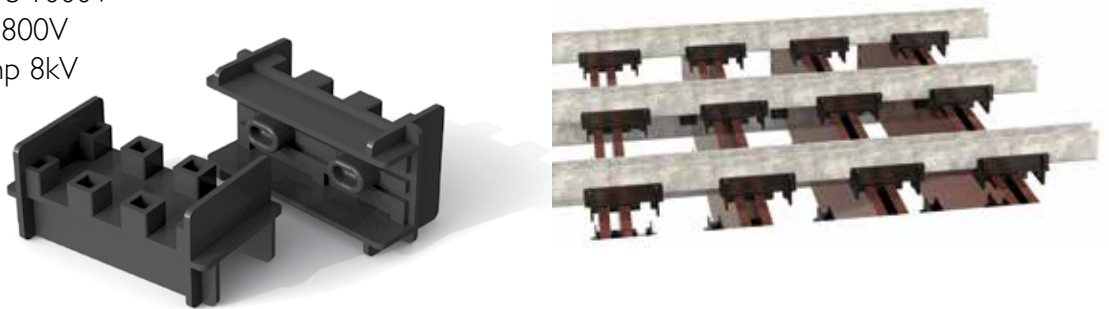
# INSULATING COMPONENTS AND BUSBAR SYSTEMS (CONTINUED)



## BUSBAR SUPPORT - RMS

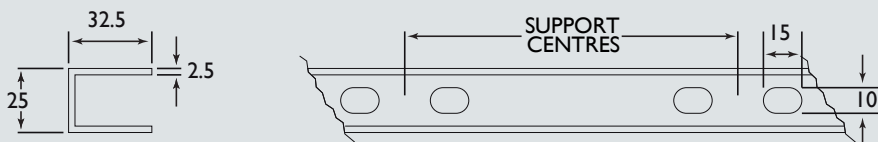


Pole centres at minimum of 80mm, adjustable to suit rail  
 l<sub>cw</sub> up to 50kA/3s  
 IEC 61439 compliant  
 Self extinguishing: UL94-V0  
 Glow wire 960 deg C  
 Equipment Voltage U<sub>e</sub> 1000V  
 Insulation Voltage U<sub>i</sub> 800V  
 Impulse Voltage U<sub>imp</sub> 8kV

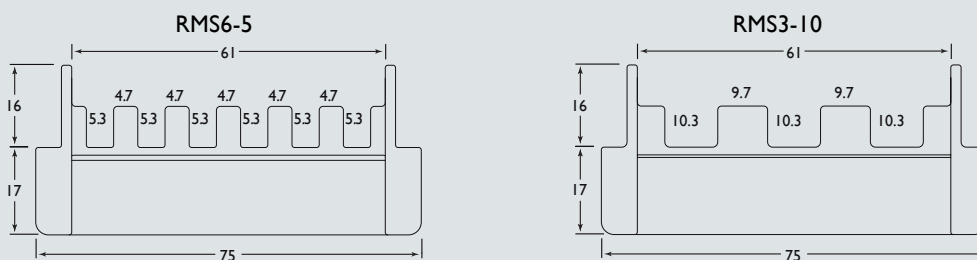


Description	Application	Conductor size	Fault LVL / Spacing	Part No.
RMS3-10	Rail mount	3 X 10mm Thk Cu	50 kA @ 80 CTRS, 300mm spacing	TRMS3-10
RMS6-5	Rail mount	6 x 5mm Thk Cu	50 kA @ 80 CTRS, 300mm spacing	TRMS6-5

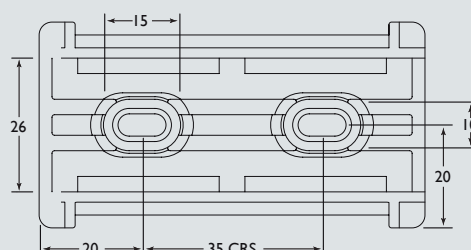
### Mounting Rail



Installation details with finished hole dimensions after painting or plating.  
 Slot dimensions should be 15 x 10 mm, tolerance of ±0.3 mm on both dimensions



### Base Detail



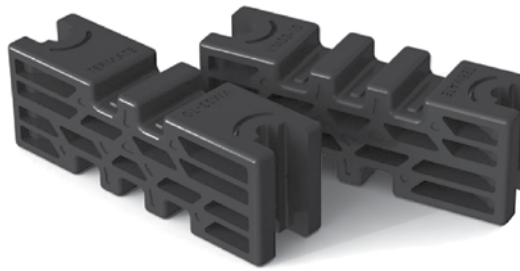
# INSULATING COMPONENTS AND BUSBAR SYSTEMS (CONTINUED)



## BUSBAR SUPPORT - VMS

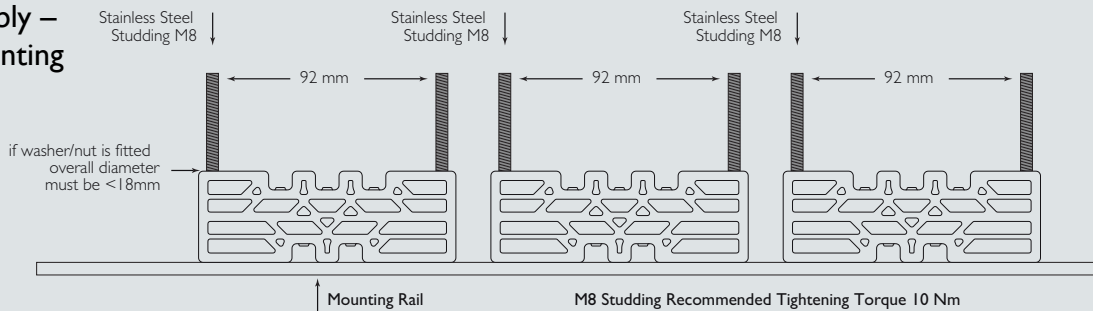


Pole centres of 110mm or 130 mm with spacer or adjustable rail  
 lcv up to 65kA/3s  
 IEC 61439 compliant  
 Self extinguishing: UL94-V0  
 Glow wire 960 deg C  
 Equipment Voltage U<sub>e</sub> 1000V  
 Insulation Voltage U<sub>i</sub> 1000V  
 Impulse Voltage U<sub>imp</sub> 12kV

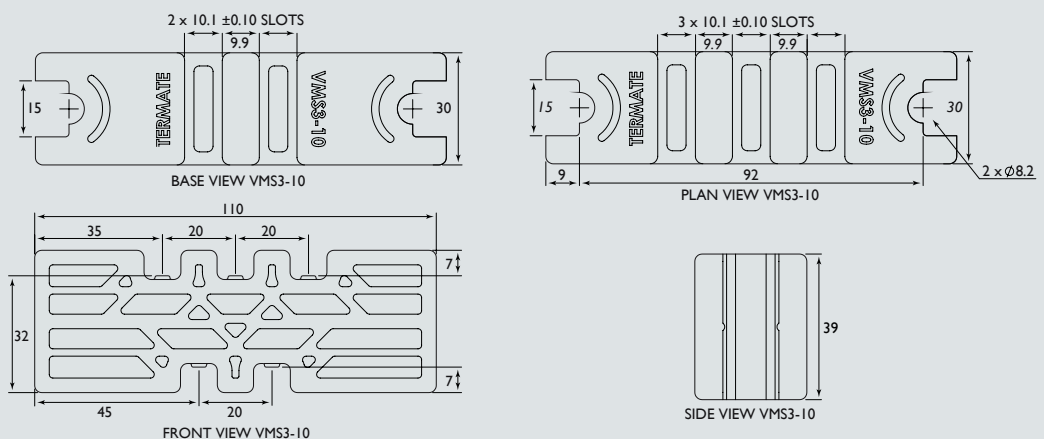


Description	Application	Connection	Part No.
VMS3-10	Mount on own with M8 SS stud (stud ctrs 92mm)	1, 2 or 3 bar 10mm	TVMS3-10
VMS-SI 10	Mounting spacer for VMS3-10	Pole CTRS 110mm	TVMS-SI 10
VMS-SI 30	Mounting spacer for VMS3-10	Pole CTRS 130mm	TVMS-SI 30

### 3 Pole Assembly – Versatile Mounting



### VMS3-10 Busbar Support



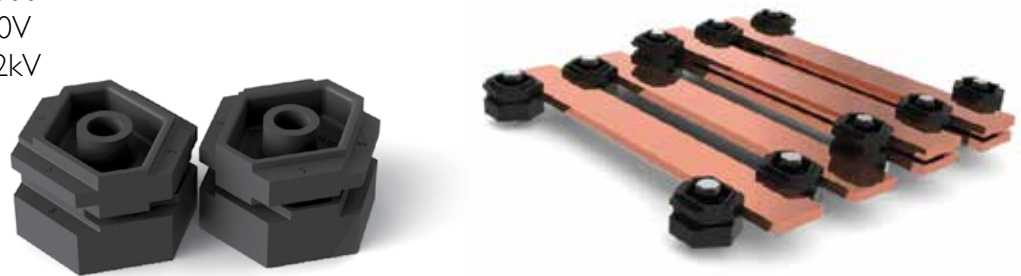
# INSULATING COMPONENTS AND BUSBAR SYSTEMS (CONTINUED)



## BUSBAR SUPPORT - FBS



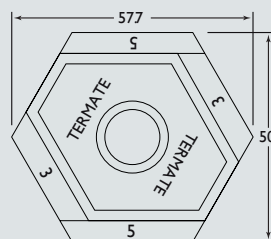
Max operating temp 120 deg C  
IEC 61439 compliant  
Self extinguishing: UL94-V0  
Glow wire 960 deg C  
Equipment Voltage Ue 1000V  
Insulation Voltage Ui 1000V  
Impulse Voltage U imp 12kV



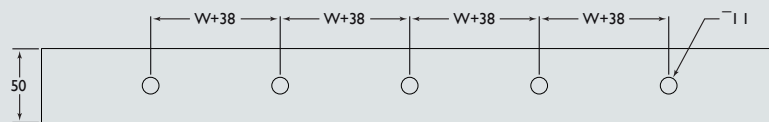
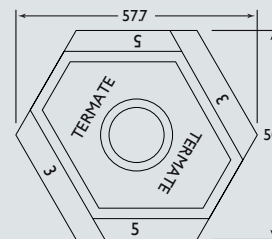
Description	Application	Conductor size	Pole centres	Part No.
FBS3-10T	Component of a set	3, 5, 6, 8 and 10mm	Cu Width + 38mm	TFBS3-10T
FBS3-10 B	Component of a set	3, 5, 6, 8 and 10mm	Cu Width + 38mm	TFBS3-10B

### FBS3-10 Complete Assembly

FBS3-10T Top Support



FBS3-10B Bottom Support



INSTALLATION DETAILS

W = Width of conductor



# INSULATING COMPONENTS AND BUSBAR SYSTEMS (CONTINUED)



## BUSBAR SUPPORT - VMS

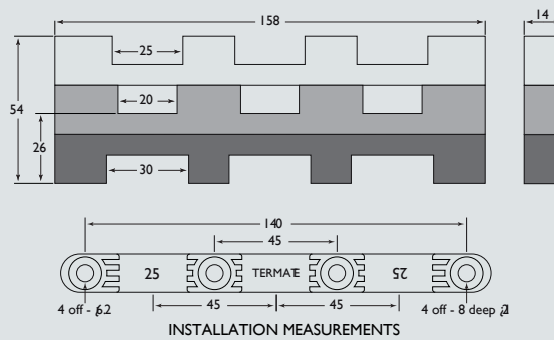


Pole centres of 45mm  
 lcw 25kA/3s at 315mm Spacing & 50kA/1s at 220mm spacing  
 Based on conductor size  
 IEC 61439 compliant  
 Self extinguishing: UL94-V0  
 Glow wire 960 deg C  
 Equipment Voltage Ue 1000V  
 Insulation Voltage Ui 1000V  
 Impulse Voltage U imp 6kV

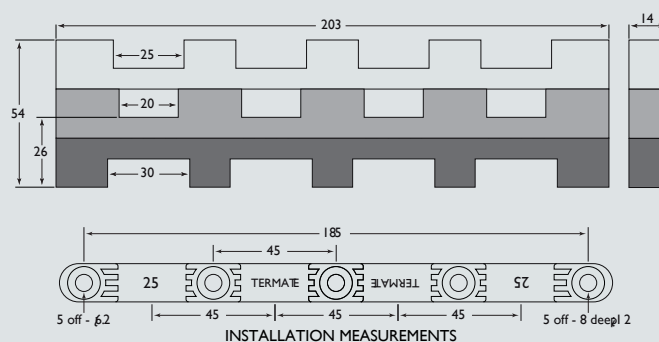


Description	Application	Conductor size	Part No.
DBBS-3P	3 poles at 45mm pole ctrs	20x10, 25x10, 30x10, 20x5, 25x5	DBBS-3T
DBBS-4P	4 poles at 45mm pole ctrs	Pole CTRS 110mm Pole CTRS 110mm	DBBS-4T

DBBS-3P Busbar Support



DBBS-4P Busbar Support



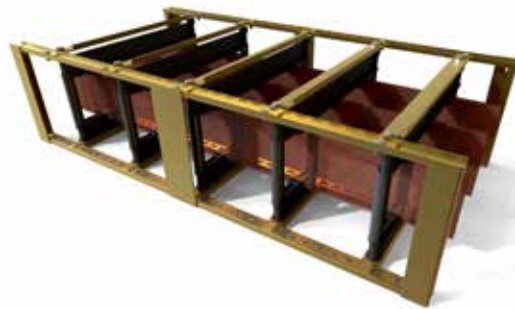
# INSULATING COMPONENTS AND BUSBAR SYSTEMS (CONTINUED)



## BUSBAR SUPPORT SYSTEM - MASTERFRAME



Uses MX busbar supports  
Easy Spacing on number of slots  
SANS 1973-8 compliant



Description	Application	Fits Panel Width	Conductor size Cu 6mm & 10mm Thk	Part No.
M3A-400	1 bar per pole, 3 or 4 pole	400mm	25, 30, 40, 50, 75, 80 and 100	MM3A-400
M3A-600	1 bar per pole, 3 or 4 pole	600mm	25, 30, 40, 50, 75, 80 and 100	MM3A-600
M3A-800	1 bar per pole, 3 or 4 pole	800mm	25, 30, 40, 50, 75, 80 and 100	MM3A-800
M3A-900	1 bar per pole, 3 or 4 pole	900mm	25, 30, 40, 50, 75, 80 and 100	MM3A-900
M3A-1000	1 bar per pole, 3 or 4 pole	1000mm	25, 30, 40, 50, 75, 80 and 100	MM3A-1000
M3A-400	2 bar per pole, 3 or 4 pole	400mm	25, 30, 40, 50, 75, 80 and 100	MM4A-400
M3A-600	2 bar per pole, 3 or 4 pole	600mm	25, 30, 40, 50, 75, 80 and 100	MM4A-600
M3A-800	2 bar per pole, 3 or 4 pole	800mm	25, 30, 40, 50, 75, 80 and 100	MM4A-800
M3A-900	2 bar per pole, 3 or 4 pole	900mm	25, 30, 40, 50, 75, 80 and 100	MM4A-900
M3A-1000	2 bar per pole, 3 or 4 pole	1000mm	25, 30, 40, 50, 75, 80 and 100	MM4A-1000

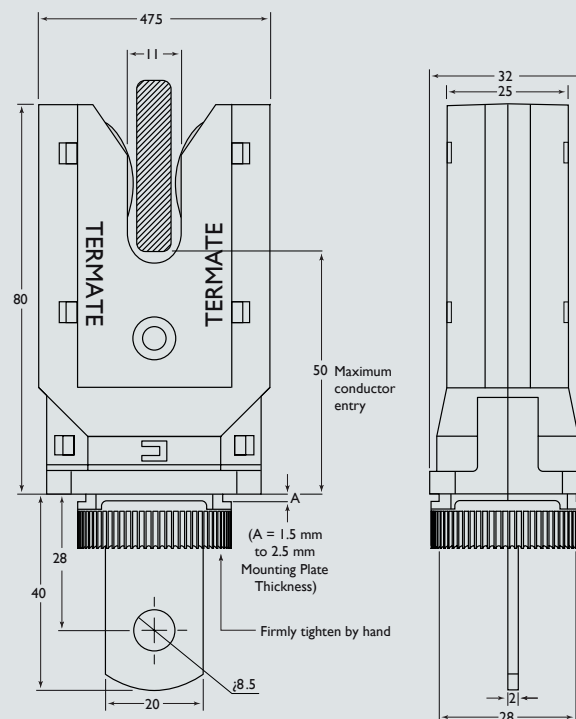
# INSULATING COMPONENTS AND BUSBAR SYSTEMS (CONTINUED)



## POWER BUSBAR PLUG



Description	Application	Current / Cu Size	Part No.
BPSP250-6	Withdrawable power plug	250A / 6 mm Cu	TBPSP250-6
BPSP250-10	Withdrawable power plug	250A / 10 mm Cu	TBPSP250-10
BPSP400-6	Withdrawable power plug	400A / 6 mm Cu	TBPSP400-6
BPSP400-10	Withdrawable power plug	400A / 10 mm Cu	TBPSP400-10



# INSULATING COMPONENTS AND BUSBAR SYSTEMS (CONTINUED)

## CONTROL SLIDE PLUG/CONNECTOR

Uses MX busbar supports  
Easy spacing on number of slots  
SANS 1973-8 compliant

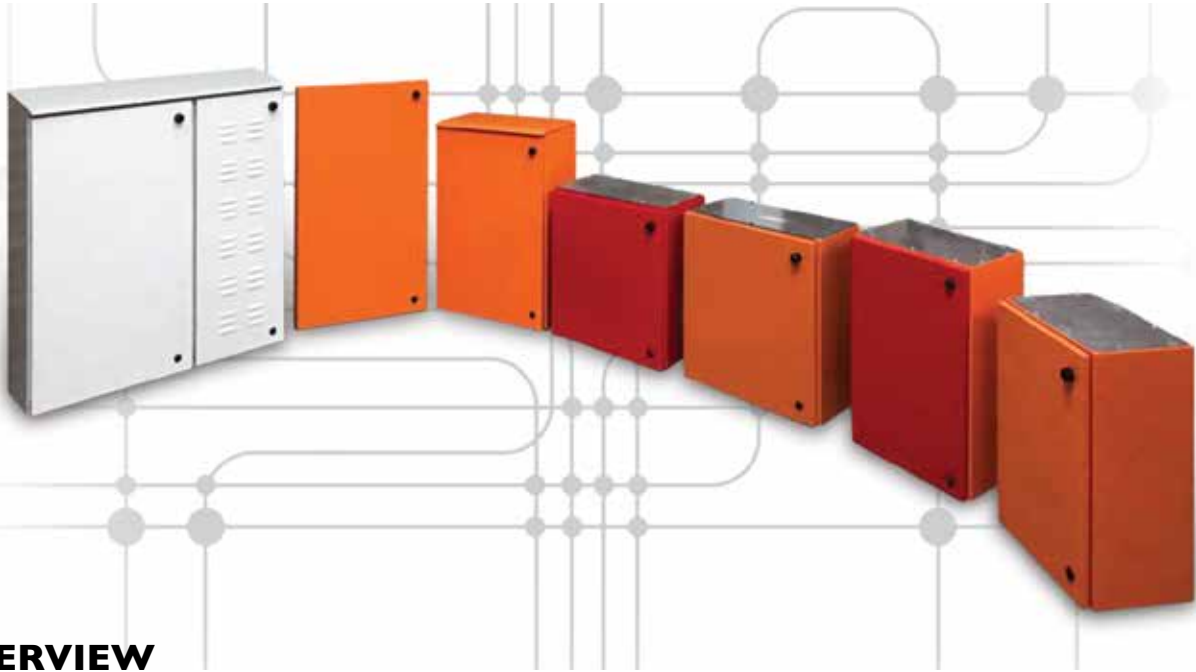


Description	Application	Conductor size Cu 6mm & 10mm Thk	Part No.
Slide contact 10+1 early make	Withdraw side	1-2.5mm SQxM3 insulated forked lug	MWDSPI0+IWD
Slide contact 1p2x 10+1 early make	Assembly side (live side)	1-2.5mm SQxM3 insulated forked lug	MWDSPI0+IA

# WALL MOUNT ENCLOSURES AND COVERS



## M280 MODULAR WALL MOUNT ENCLOSURES



### OVERVIEW

The Modular M280 range off wall mount panels was developed 10 years ago to allow modular friendly sizes in increments of 200mm to allow the assembling together of enclosures to form a multi-cubicle panel. The basic requirements were to have a good quality panel with robust hinges/latches and galvanized gland plates.



### THE MODULAR SYSTEM

The Modular system can be bolted together to form multiple cubicles where a higher form of separation is required.

Spare parts can be supplied separately with client punching details on doors if required.



# TECHNICAL NOTES

## **M280** - INDOOR TYPE SINGLE DOOR CONSTRUCTION

- 2.5 mm galvanised gland plates top and bottom
- Bolt on outer door hinge to allow easy replacement
- Optional inner door fitted to body
- Aluzinc 2mm chassis plate
- Earth stud on all doors
- Door latches with 3 mm steel cam and square key
- Outer door to be fitted with one barrel type latch to allow locking
- Colour options of orange, light grey, red and white
- 280 mm of useable depth measured inside the enclosure

## **M280** - OUTDOOR TYPE DOOR CONSTRUCTION

- 2.5 mm galvanised gland plates bottom only
- Weatherproof canopy
- Double door construction with adjustable inner door (where inner door is required)
- Optional inner door fitted to body
- Bolt on outer door hinge to allow easy replacement
- Aluzinc 2mm chassis plate
- Earth stud on all doors
- Door latches with 3 mm steel cam and square key
- Outer door to be fitted with one barrel type latch to allow locking
- Colour options of light grey or orange
- 280 mm of useable depth measured inside the enclosure
- Optional louvred door where high heat loads are expected

## TESTING / CERTIFICATION

- Tested to IP55 – Test certificate TR2335/13-049

# WALL MOUNT ENCLOSURES AND COVERS (CONTINUED)



## M280 SINGLE DOOR (IP55)



Size			Part No.
Width	Height	Depth	
400	600	280	M280-46
400	800	280	M280-48
400	1000	280	M280-410
600	400	280	M280-64
600	600	280	M280-66
600	800	280	M280-68
600	1000	280	M280-610
600	1200	280	M280-612
800	600	280	M280-86
800	800	280	M280-88
800	1000	280	M280-810
800	1200	280	M280-812

# WALL MOUNT ENCLOSURES AND COVERS (CONTINUED)



## M280 DOUBLE DOOR WITH CANOPY (IP55 OUTDOOR USE)



Size			Part No.
Width	Height	Depth	
400	600	280	M280-46DD
400	800	280	M280-48DD
400	1000	280	M280-410DD
600	400	280	M280-64DD
600	600	280	M280-66DD
600	800	280	M280-68DD
600	1000	280	M280-610DD
600	1200	280	M280-612DD
800	600	280	M280-86DD
800	800	280	M280-88DD
800	1000	280	M280-810DD
800	1200	280	M280-812DD



# WALL MOUNT ENCLOSURES AND COVERS (CONTINUED)



## M280 SINGLE DOOR WITH LOUVRED DOOR (IP3X HIGH HEAT REJECTION)



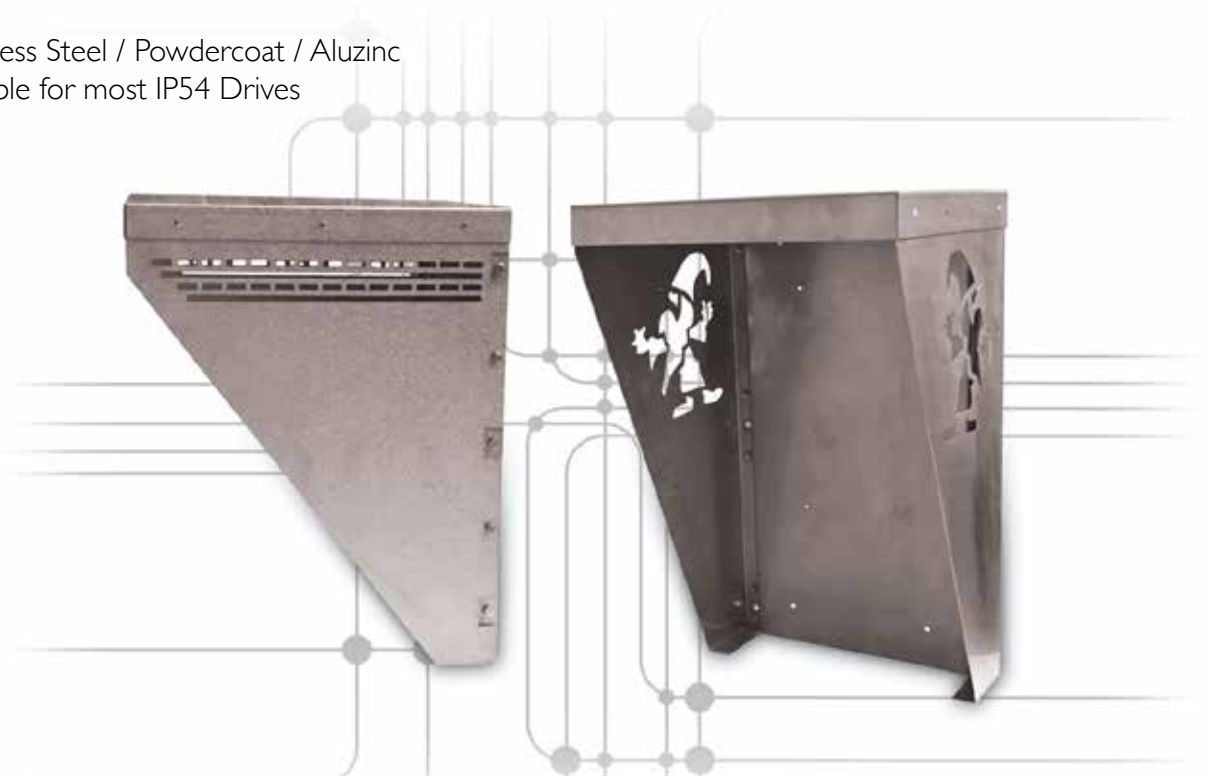
Size			Part No.
Width	Height	Depth	
400	600	280	M280-46VSD
400	800	280	M280-48VSD
400	1000	280	M280-410VSD
400	1200	280	M280-412VSD
600	400	280	M280-64VSD
600	600	280	M280-66VSD
600	800	280	M280-68VSD
600	1000	280	M280-610VSD
600	1200	280	M280-612VSD
800	600	280	M280-86VSD
800	800	280	M280-88VSD
800	1000	280	M280-810VSD
800	1200	280	M280-812VSD

# WALL MOUNT ENCLOSURES AND COVERS (CONTINUED)

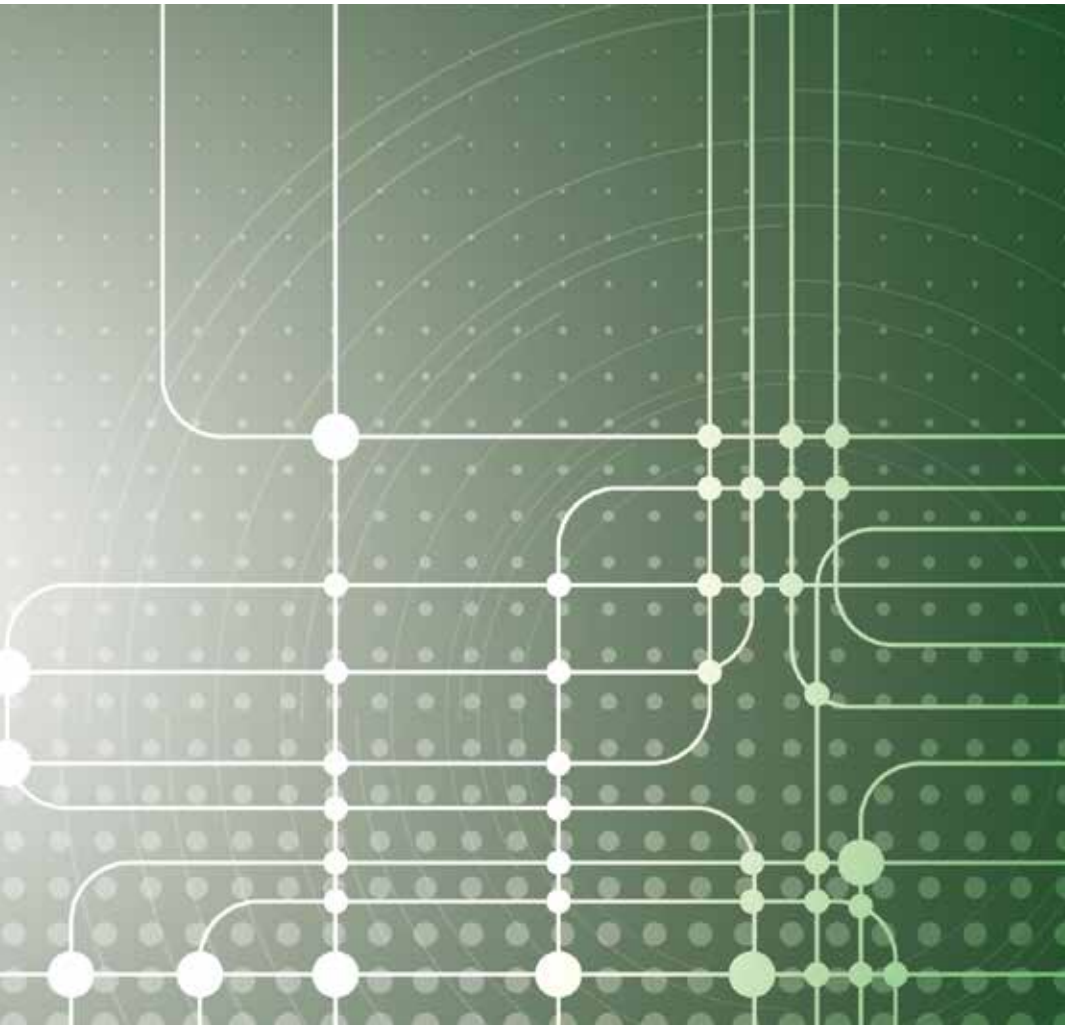
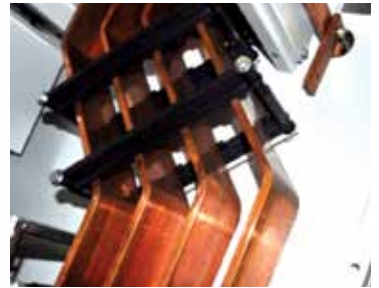


## VARIABLE SPEED DRIVE COVERS

- Stainless Steel / Powdercoat / Aluzinc
- Suitable for most IP54 Drives



Approx Drive Size	Material	Suitable Drive Manufacturer	Part No.
< 7.5 kW	Aluzinc	LS DRIVES	M-VSD-CA-4645
9 kW - 15 kW	Aluzinc	LS DRIVES	M-VSD-CA-5755
18,5 kW - 30 kW	Aluzinc	LS DRIVES	M-VSD-CA-5995
45 kW - 90 kW	Aluzinc	LS DRIVES	M-VSD-CA-6855
< 7.5 kW	Powder coated light grey RAL7035	LS DRIVES	M-VSD-CP-4645
9 kW - 15 kW	Powder coated light grey RAL7035	LS DRIVES	M-VSD-CP-5755
18,5 kW - 30 kW	Powder coated light grey RAL7035	LS DRIVES	M-VSD-CP-5995
45 kW - 90 kW	Powder coated light grey RAL7035	LS DRIVES	M-VSD-CP-6855
< 7.5 kW	SS 304	LS DRIVES	M-VSD-CS-4645
9 kW - 15 kW	SS 304	LS DRIVES	M-VSD-CS-5755
18,5 kW - 30 kW	SS 304	LS DRIVES	M-VSD-CS-5995
45 kW - 90 kW	SS 304	LS DRIVES	M-VSD-CS-6855





[www.merlinsystems.co.za](http://www.merlinsystems.co.za)

Tel: +27 11 315 3038/14 | E-mail: [sales@merlinsystems.co.za](mailto:sales@merlinsystems.co.za)

13 Brons Crescent, Gauteng Business Park, Olifantsfontein, Gauteng, South Africa